



TRANSFORMATIONAL HEALTHCARE TO COVID-PREP YOUR HEALTHCARE ORGANIZATION



MRG
Medical



MRG
Care™ 360

COVID PROOF YOUR PRACTICE

You've got a symptom?
We've got a solution.

Symptom-driven telemedicine visits to provide the right treatment, right way.



How it works

- ▶ **STEP 1**
Set up your FREE 20 Minute LIVE Demo and Strategy Session with an MRG Medical Representative
- ▶ **STEP 2**
Identify the Patient Population and Design your Strategic Road map
- ▶ **STEP 3**
Define Scope of Work and Implementation Plan
- ▶ **STEP 4**
Inform, Engage, Educate, and Onboard Patients
- ▶ **STEP 5**
Empower Patients and Turn Homes into Smart Clinics
- ▶ **STEP 6**
Serve patients through Screening for Covid-19 and Monitoring Vitals and other Symptoms that are Disease Specific with Remote Patient Monitoring and TeleHealth solutions.

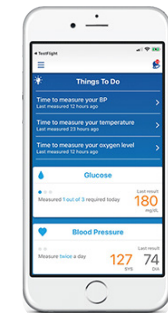
* ALL patients on MEDICARE or MEDICAID with 1 or MORE chronic disease qualify. For commercial insurance and cash pay inquire for more information or check with your insurance provider



IGG / IGM Serology Test



PCR Nasal Swab Test



YOUR REVENUE NUMBERS

How the math works for COVID testing and remote patient monitoring!

The proforma simplified

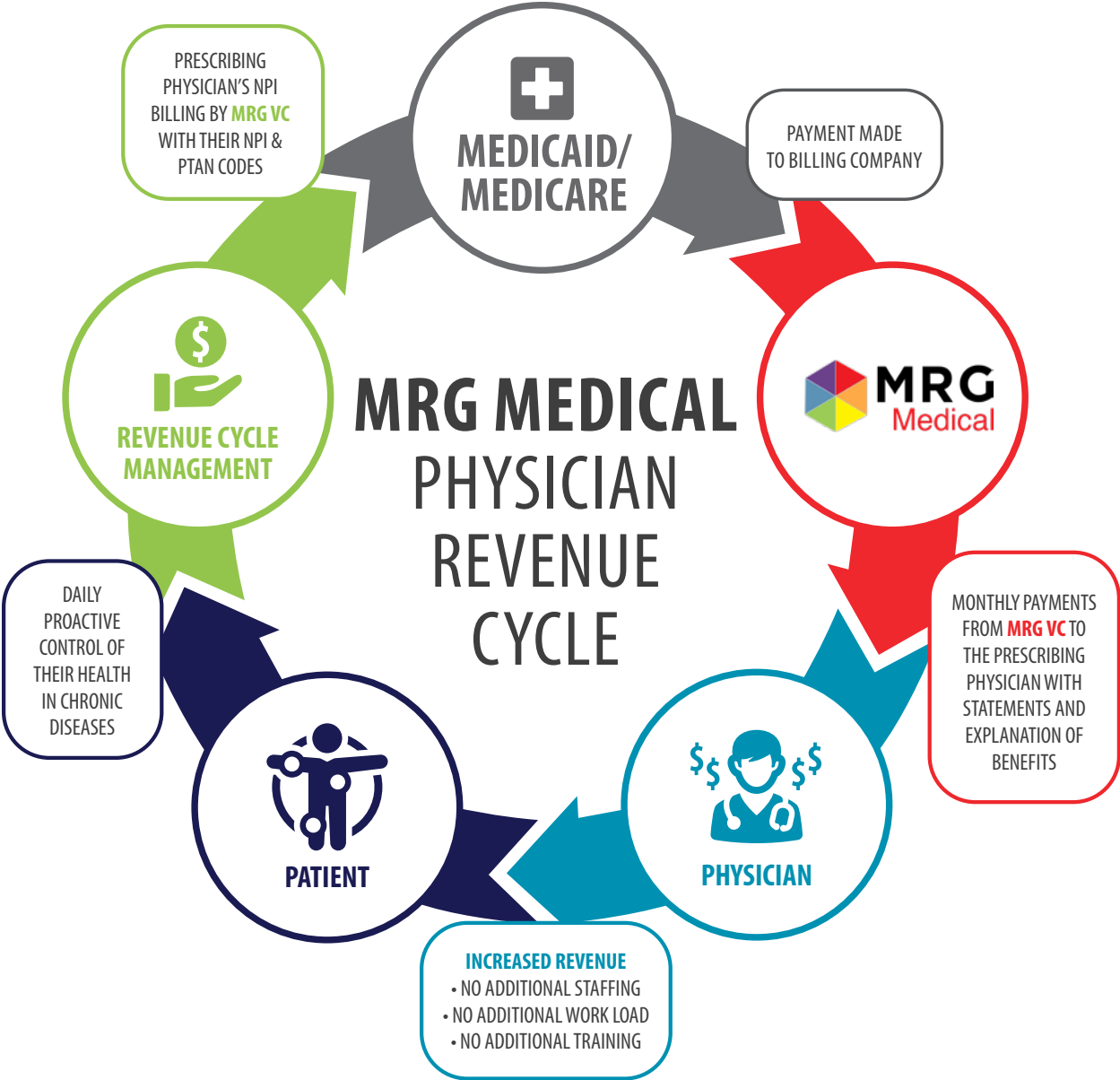
**INCREASED PHYSICIAN REVENUE
ON 300 PATIENTS**

\$8,100 ONE TIME COVID
\$21,663.00 MONTHLY
\$268,056.00 ANNUALLY

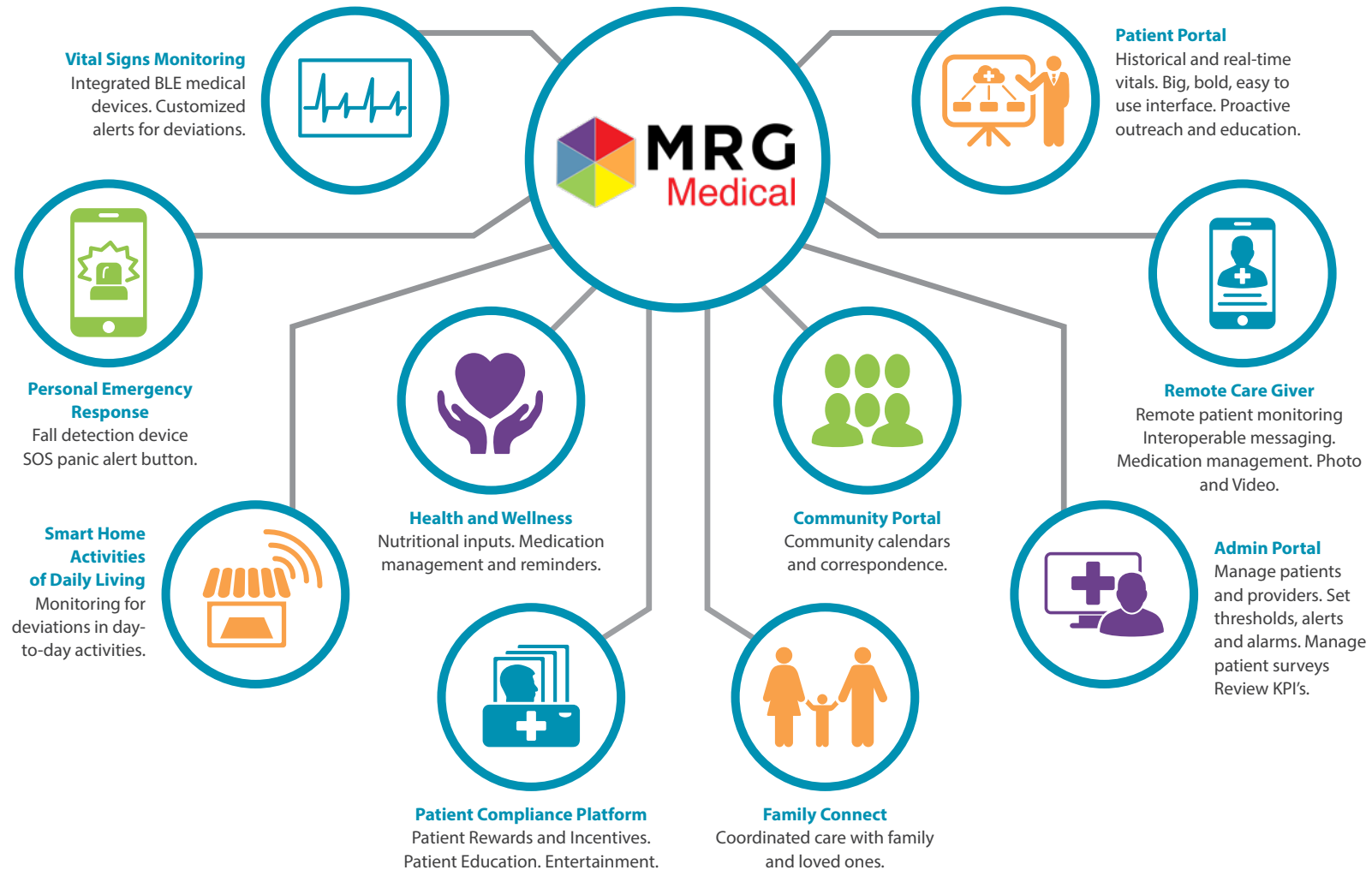
CTP CODE	DESCRIPTION	% OF REIMBURSEMENT	PP/PM	TOTAL PATIENTS	MONTHLY REVENUE
99454	Monthly device coverage*	100%	\$63.55	300	\$19,065.00
99457	20 min of monitoring	100%	\$51.94	300	\$15,582.00
99446	phy. interprofessional consultation	75%	\$36.72	300	\$11,016.00
87635	HCPC (U002) COVID tests	100%	\$52.00	300	\$15,600
			Monthly Revenue	300	\$45,663.00
			One Time COVID Test Reimbursement	300	\$15,600
			Investment In COVID Test	300	\$7,500.00
			VCM Software Fee	300	\$24,000.00
			Total Net	300	\$29,763.00

**Payable only first year enrolled*
***Can be billed twice monthly*
**First 300 testing kits \$25 while supplies last*
\$114.58 plus any episodic virtual visits or additional time per 20 min (99446,99451, 99458)
**We cover the cost of the device upfront using coronavirus relief funding*
**Money back guarantee if we do not have 300 patients qualify after implementation*

YOUR REVENUE CYCLE



Comprehensive Care Platform Customized for Every Patient



Ongoing MRG Program Ensures Alignment with Our Partners

Driving Accessibility, Improved Patient Compliance and Outcomes

Partners receive continual data analytics, operational, work-flow, integration, and implementation, support and recommendations

✓ **Business plan Road-map**
60 Hours x \$150/hr = **\$9,000 Value**

✓ **EMR Integration Support**
One time cost of **\$5,000 to \$10,000** depending on variables we are going to absorb the cost

✓ **On-boarding Support**
3 Days/week for 3 weeks at 5 hours per day = **\$3,375** per 1k patients

- EMR Patient Identification
- Insurance Verification
- Patient Engagement
- Patient Enrollment

✓ **On-boarding Support**
\$50/hour for 30 min for 1k patients is 500 hours = **\$25,000** per month

✓ **Data Analyst**
\$40/hour for 170 hours for 1k patients = **\$6800** per month

- Review Data
- Clinical
- Financial (Optimize Reimbursement for Monitoring of Records & Episodic Codes)
- Operational

✓ **Health Coaches**
\$70/hr x 20min/mo per patient per 1k = **\$23,350/mo**

- Nutritional consulting
- Patient advocacy
- Diet planning
- Review of care plans



TOTAL REGULAR PRICE: \$67,525 for 1st Month

INCREDIBLE DEAL \$12,975 NOW
With 300 COVID TESTING KITS!

2 Pay \$6,248 Now

2 Pay \$6,249 After Implementation

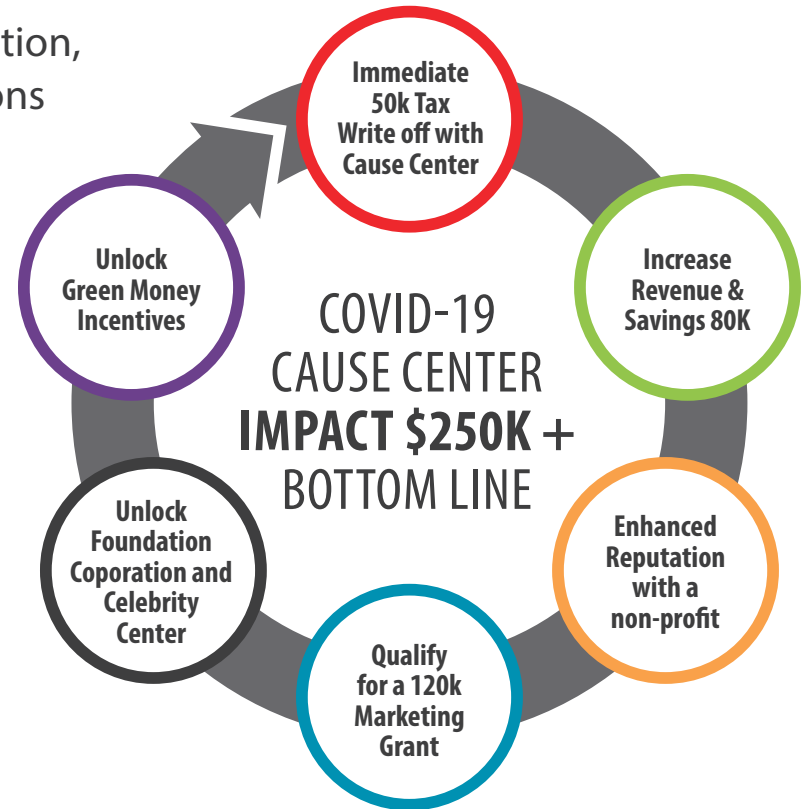
COVID PROOF YOUR PRACTICE

Driving Accessibility, Improved Patient Compliance and Outcomes

Partners receive a full service Covid-19 outreach cause center: Creation, operation, integration, implementation, support and recommendations

- ✓ **Cause Center Creation**
17 hours x \$150/hr = **\$2,500 Value**
 - Non-Profit/501 C 3 Paperwork
 - By-Laws, Conflict of interest Policy, Code of Ethics
 - State and Federal filings included
- ✓ **Program Integration**
One time cost of **\$3,000 to \$5,000**
 - Drive-thru launch event through cause center volunteers/media
- ✓ **Compliance Support**
\$150/hour for 40 hours per month = **\$6,000** per month
 - Quarterly Impact Reports
 - Grant Compliance / Bookkeeping
 - Annual Tax Filing 990s
- ✓ **Education Support**
\$50/hour for 80 hours per month = **\$4,000** per month
 - Mobile App and Digital Training
 - Dedicated Outreach Manager
 - Bi-Weekly Revenue Trainings

- ✓ **Digital Asset Creation**
\$150/hour for 40 hours per month = **\$6,000** per month
 - Website Creation / Landing Pages
 - Outreach Video
 - Creation of Google Ads
 - Weekly bidding / keyword tracking
- ✓ **Grant Writing**
\$200/hour for 20 hours per month = **\$4,000** per month
 - Marketing Grant
 - Green Money Incentives
 - Foundation / Corporation Grants
 - Celebrity Grants
- ✓ **Increased Sales & Savings**
On average 25% more patients
Discounts of 20% or more as a non-profit
Monthly value = \$6,800 per month
 - More positive PR with a non-profit arm
 - Reduced payroll Recruiting Volunteers
 - Extra Discounts as a non-profit cause center
 - Better response in outreach process



TOTAL REGULAR PRICE: \$67,525 for 1st Month

**TOTAL REGULAR CAUSE CENTER PRICE:
\$32,800 for 1st Month**

**OVER 100K+ WORTH OF VALUE
INCREDIBLE DEAL \$14,997 NOW
With 300 COVID TESTING KITS!**

**2 Pay 7,498 Now
2 Pay 7,499 After Implementation**

**90 day money back guarentee*

VIRTUAL CARE MANAGEMENT: Telemedicine, Remote Patient Monitoring, Chronic Care Management

▶ THE PROBLEM

America's Healthcare System is Suffering from Outdated Care Delivery Models and a Shortages of physicians and clinical staff.



Healthcare's Shift from Fee-for-Service Payment Models

Value-based care is emerging as the leading payment model by payers. Providers are being reimbursed for improved patient outcomes rather than the number of services provided, and incentivising health care operations to adopt our technology.



Disparate Technology Solutions

Outdated technologies are expensive and do not offer healthcare systems simple integrations. These integrations are key to providing value-based care to patients across the care continuum, and integrate directly into current workflows.



The Silver Tsunami → 10,000 Lives Turning 65 EVERY DAY

"The nation's population is growing and aging, and as we continue to address population health goals like reducing obesity and tobacco use, more Americans will live longer lives. These factors and others mean we will need more doctors," said AAMC President and CEO, Darrell G. Kirch, MD.



Shortage of Clinicians and Physicians

For the 5th year in a row (2019), more physicians left the profession of medicine than graduated from U.S. medical schools. There are currently 66 million Medicare patients being served today by physicians. With the explosive predictive growth in Medicare rolls, technology will play an important role in managing patients effectively. We will need to adopt and use technology to make Health care more accessible while improving overall bottom line.

▶ OUR SOLUTION

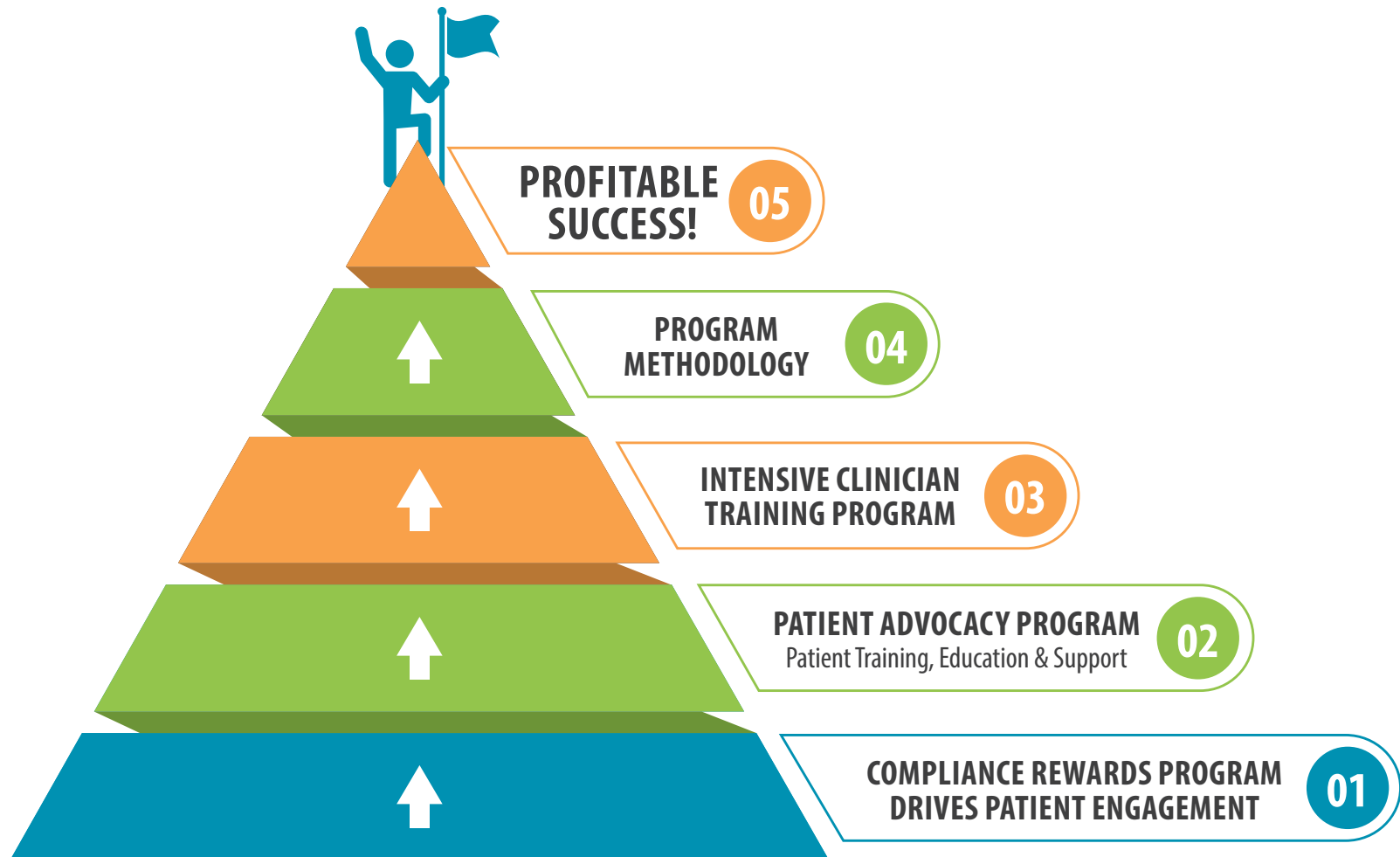
Integrated fully comprehensive state of the art RPM patient engagement solution with integrated devices and communication tools to support value-based care and improved patient outcomes.



▶ MRG MEDICAL VIRTUAL CARE

We commit ourselves to providing state of the art technology that empowers patients to take control of their lives and help manage chronic disease. Managing Patients daily using in home peripheral devices to provide your care team with vital biometric data, nutrition, medication, and health survey responses in real-time. This daily actionable data allows the care team to take immediate specific steps to help mitigate findings which are outside the defined protocols set by the physician and care team. This innovative approach allows the patient to age in place, receive better quality of care and reduce unnecessary ER visits, and hospitalizations.

PYRAMID TO SUCCESS: The Driver of Patient and Provider Results



Program Performance Driven By
Education Coaching, Joint Planning, and Execution.

STEPS TO MRG HEALTH VIRTUAL CARE LAUNCH

INITIAL ASSESSMENT & PROGRAM FRAMEWORK



EMR & Billing

- What EMR are you using?
- Is your billing done in-house? Or Out? If out, what is their information?
- Are you happy with your billing company?



Patient Population & Disease States

- How many patients are in the EMR/system total?
- What is the payormix? (Medicaid, Medicare Ex. 60/40%)
- Have you done any COVID testing for your patients?
- Are you currently partnering with a telemedicine provider? If, so what provider?
- What other diseases would you like to focus on?



Co-Morbidities & ICD 9-10 Review

- Are there any patients that are high-risk patients with Co-morbidities?



Insurance Verification & Authorization

- Would you like us to do pre-authorization?
- Are you doing the pre-authorization?



Human Capital & Potential Staffing

- How many medical assistants?
- How many schedulers?
- How many nurses?
- How many mid-levels?
- How many doctors?



Facility Evaluation

- How many square feet?
- How many clinic rooms?
- Is there any room for expansion?



Patient Consents

- Do all patients have a patient consent on file?
- Does the practice have all consents on patient on files?



Launch Event

- What is the address to your facility?
- How big is your parking lot? (~square feet, parking spaces)
- At this time do you have access to cost effective PPEs?
- Do you have access to a larger parking lot? (relationship/partnership)

\$500 VALUE
FREE FOR
CEO'S, CHIEF MEDICAL OFFICERS,
AND CLINICAL ADMINISTRATORS








INCLUDES: HCO Virtual Care Management Assessment + 20 minute On-line Live Virtual Demo and Strategic Roadmap & Plan

SCHEDULE NOW!











STEPS TO MRG HEALTH VIRTUAL CARE LAUNCH

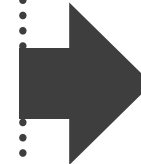
STAGE 1 AGREEMENT

3 Step Process to Achieve Result (Generating \$250k in 12 months or Less)

-  Agreement and Planning
-  Determine Target Diseases
-  Total Patients
-  Total Patients Over 30-60 Days (300 Patients)
-  Determine Start Date
-  Define Program Objective & Measurement Standards
-  Define Training On-boarding, Enrollment, Clinical Monitoring and Reporting Guidelines

Implementation & Roll-Out

-  Doctors Approve Patient for RPM
-  Educate Patient on New Legislation, Total Costs, Making Home Into a Smart Clinic
-  Provide Practice with On-boarding Road Map & VCM Business Plan
-  Receive Project Manager & Data Analyst Support
-  Prioritize Implementation Rollout & Identify Revenue Opportunities
-  Define Operational Reviews & Guidelines
-  Schedule Initial Patient Assessment & Answer Any Concerns
-  Send Patient Digital On-boarding Surveys & Educational Content
-  On-board Patient & Monitor Vitals (1 or More)
-  Bill



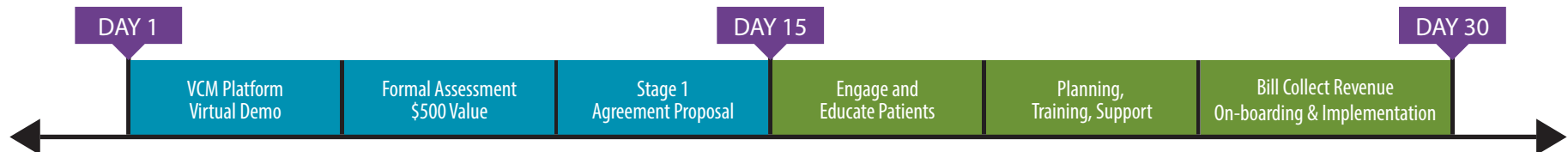
1,000
PATIENTS



\$21,000



MONTHLY
REOCCURRING
REVENUE



STRATEGIC PARTNERS AND KEY CUSTOMERS



For any further information please contact

KYLE HAYUNGS

Founder/CEO - Strategic Business Development

Kyle@MrgMedical.com

Direct: (956)-624-0540

Office: 1-855-MRG-5333

Fax: 1-877-MRG-2344

www.MRGMedical.com

